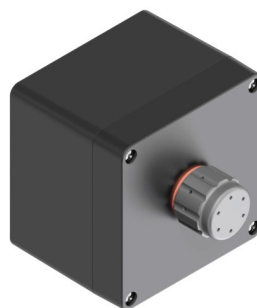


BUZZER Ex

GBZ



*Example of Mounting
in Increased Safety
Enclosure*



*Example of Mounting
in Flameproof
Enclosure*



sermatGRÜN
ex

REV.02 / 06.03.2025

BUZZER Ex

Technical Information

TECHNICAL SPECIFICATIONS

TYPE OF PROTECTION

Ex "d" – flameproof
 Ex "t" – dust ignition protection
 Ex "e" - increased safety
 Ex "m" - encapsulated

MARKING

Ex db eb mb IIC Gb
 Ex tb IIIC Db

APPLICATION AREA

Zone 1
 Zone 2
 Zone 21
 Zone 22

INGRESS PROTECTION

IP66W
 (W: salt spray)

APPLICATION TEMPERATURE

-50°C to 60°C (-58°F to 140°F)

THREAD

M22 x 1,5
 3/4" NPSM

THREAD LENGTH

57mm (Extra Long)

INSTALLATION

for M22x1,5 thread

Ex "d" enclosure:
 min. wall thickness: 8 mm engaged thread.
Ex "e" enclosure:
 min. wall thickness: 3 mm engaged thread.
Ex "t" enclosure:
 min. wall thickness: 3 mm engaged thread.
Ex "p" Panels

for 3/4"NPSM thread

Ex "d" enclosures:
 min. 5 fully engaged threads.
Ex "e" enclosures:
 min. wall thickness: 3,7 mm engaged thread.
Ex "t" enclosures:
 min. wall thickness: 3,7 mm engaged thread.
Ex "p" Panels

CERTIFICATE OF CONFORMITY

Segurança



OCP 0034



INMETRO

INMETRO

NCC 24.0128 U

BUZZER Ex

Technical Information

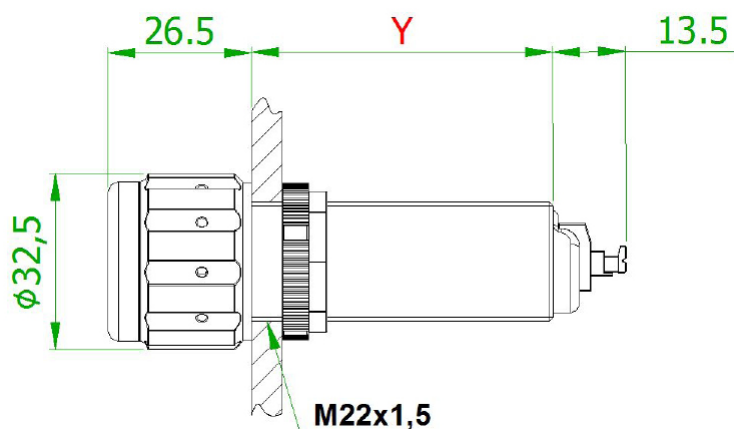
ELECTRICAL INFORMATION

BUZZER EX ELECTRICAL DATA	
RATED VOLTAGE	12 Vac/dc 24 Vac/dc 127 Vac 240 Vac
MAXIMUM CURRENT	0,030 A
SOUND INTENSITY	85 dB (40 cm)

DIMENSIONS

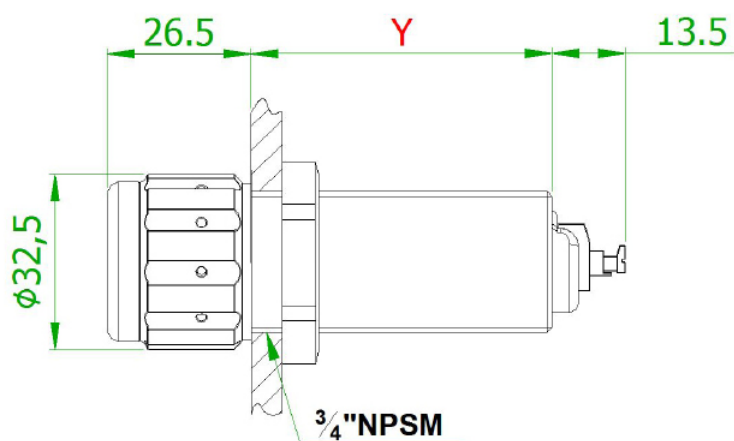
Y	
mm	inch
57mm	≈ 2.1/4"

M22 X 1,5



Dimensions in mm.

3/4"NPSM



Dimensions in mm.

BUZZER Ex

Ordering Code

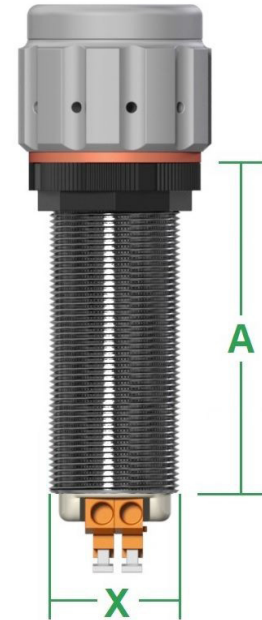
ORDERING CODE

SGEX**X**GBZ **A** + **B**

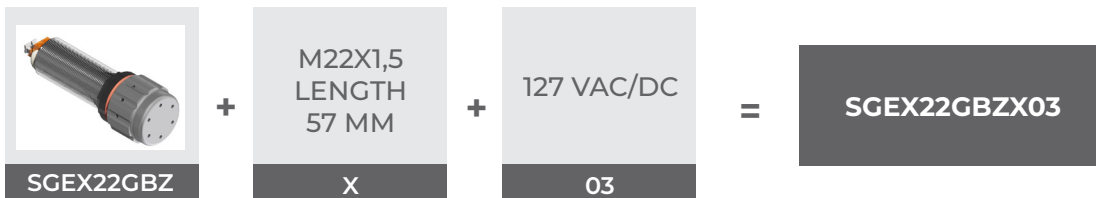
X THREAD SIZE		
size	M22x1,5	3/4"NPSM
code	22	26

A THREAD LENGTH	
length	57 mm
code	X

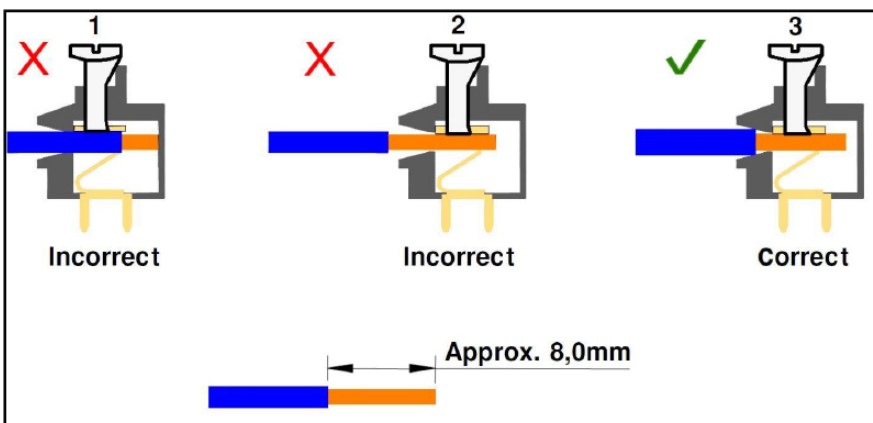
B VOLTAGE				
voltage	12 Vac/dc	24 Vac/dc	127 Vac	240 Vac
code	01	02	03	04



CODIFICATION EXAMPLE



INSTRUCTION FOR CONNECTING THE CABLES



1- The cable stripping was not sufficient, causing the insulating part of the cable to come into contact with the conducting part of the terminal.

2- The cable stripping was exaggerated, causing the conductive part of the cable to be exposed.

3- Perfect connection, the conducting part of the cable is in contact with the conducting part of the terminal and only the insulating part is exposed externally.